

Acceptance & Submission Guidelines

Jewellery



Content Index

- 01 [Introduction](#)
- 02 [New Jewellery](#)
- 03 [Pre-owned Jewellery](#)
- 04 [Antique & Vintage Jewellery](#)
- 05 [Brand Jewellery](#)
- 06 [Objects submission](#)



At Catawiki, we're constantly moving forward. We focus on premium products that really get buyers' attention. This opens up opportunities for success for you.

From the 10+ million people who visit Catawiki every month, we gain valuable information on what they're passionate about and what they're looking to buy.

With your help, we want to make sure we meet this high demand and offer the special objects that excite our growing number of bidders.

In these guidelines, we've defined the special pieces that bidders look for in our Jewellery auctions. We'll also guide you through what you need to successfully offer your Jewellery items for auction.

Our experts and account managers will be available to support and guide you towards success on Catawiki.

Thank you for joining us on this exciting journey!



Jewellery

Unique Positioning

At **Catawiki**, we auction:

- **New Jewellery** (newly produced)
- **Pre-Owned Jewellery** (from early 2000s)
- **Antique & Vintage Jewellery** (up to late 1990s)
- **Brand Jewellery** (all periods)

that are hard to find and appealing to **passionate** jewellery enthusiasts.

Because potential buyers come to Catawiki looking for special and rare jewellery, our **in-house experts hand-pick every piece** for our auctions, **ensuring** they are of **excellent quality** and are presented in the best possible way.

We do this because we aim to **keep our bidders excited** allowing them to **find the pieces they're interested in** and ensuring our **sellers have great selling experiences**.



New Jewellery

- *Product Guidelines*
- *Material Quality*
- *Degree of Craftsmanship*



New Jewellery Product Guidelines

Bidders at Catawiki look for special, quality pieces of new jewellery that are hard to find.



For these auctions, we seek **Jewellery pieces** that are:

- **directly from the producer**, not bought from other stores
- **never worn**
- were **professionally designed** and **manufactured**
- reflect a **high degree of visible craftsmanship**, e.g.
 - with a refined professional finish
 - skillful execution of the design
 - have a lasting construction
- have a **minimum expected selling price of €200**



Precious Metals

Quality Guidelines

In our New Jewellery Auctions, we auction jewellery made of the following precious metals:

- **Gold:** white, rose, yellow with at least 14 karat fineness, (Nickel Free or Nickel Safe).
- **Platinum:** with at least 800 fineness.
- **Marking:** every jewellery piece needs to be officially assay **hallmarked or professionally tested.**
- **Condition:** every jewellery piece needs to be **newly manufactured (not re-polished or re-conditioned).**

Restrictions:

- **Minimum weight:**
 - Gold or Platinum with precious stones: **1 gram**
 - Gold or Platinum with no precious stones: **2 grams**
- **Gold/ Silver-plated metal:** not accepted.
- **Silver:** not accepted except for Pearl Jewellery.



Natural Colourless Diamonds

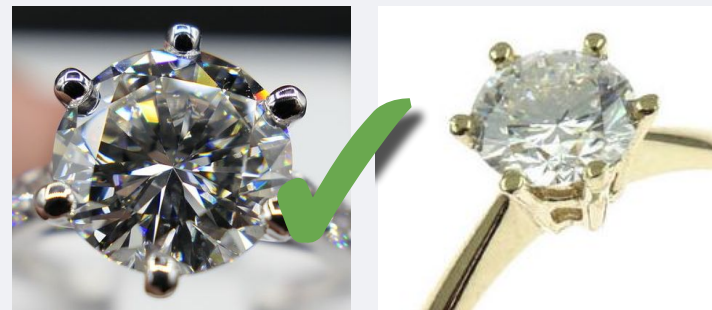
Quality Guidelines

In our New Jewellery Auctions, we auction jewellery with colourless natural diamonds with the following characteristics:

- **Clarity:** up to I1/I2, as long as inclusions do not deter the aesthetics and / or durability.
- **Shape & Cutting style:** round and fancy. Special cuts will be reviewed by experts. Old & rose cuts are not accepted.
- **Colour:** D to Z.
- **Carat weight:** all.

Restrictions:

- **Simulants:** not accepted.
- **No broken** or damaged diamonds.
- **Natural Diamond Jewellery items submitted with no lab report** cannot specify exact clarity, colour and cut grade will be assessed based on a flat price / ct.
- **Lab-grown diamonds found** in the natural diamond jewellery will be **subject to fine and permanent suspension** of seller's account.



Please note that in case of doubts regarding a treatment or the nature of a diamond, the expert may request a lab report.



Natural Coloured Diamonds

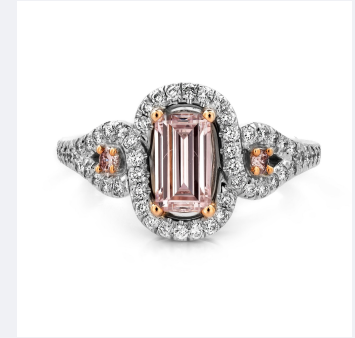
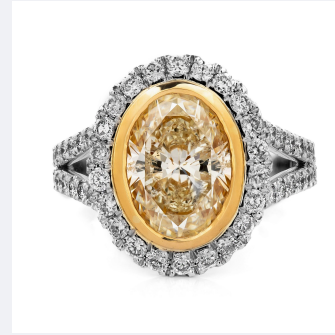
Quality Guidelines

In our New Jewellery Auctions, we auction jewellery with natural coloured diamonds with the following characteristics:

- **Clarity:** all grades, as long as inclusions do not deter colour and / or durability.
- **Shape & Cutting style:** round and fancy. Special cuts will be reviewed by experts. Old & rose cuts are not accepted.
- **Colour:** all colours indicating main fancy colour, intensity and overtone.
- **Carat weight:** all.
- **Lab report:** Always required for correct colour grading.

Restrictions:

- **Simulants:** not accepted.
- **No broken** or damaged diamonds.
- Natural Fancy Coloured Diamonds can **only** be submitted and approved in our auctions **with a gemological lab report**.
- Lab reports **for stones above >0.29ct with no clear origin of the colour** cannot be assessed as Natural Coloured Diamonds but **will be considered Colour-Treated Diamonds** unless the gemological lab is able to provide clear disclosure about origin of colour upon further analyses.



GIA NATURAL COLORED DIAMOND REPORT	
December 04, 2021	
Report Type	Grading Report
GIA Report Number	1409869895
Shape and Cutting Style	Heart Brilliant
Measurements	5.83 x 6.77 x 4.17 mm
Carat Weight	1.00 carat
Color Grade	Faint Pinkish Brown
Color Origin	Natural
Color Distribution	Not Applicable
Clarity Grade	S12

Please note that in case of doubts regarding a treatment or the nature of a diamond, the expert may request the lab to provide further proof regarding the origin of the colour.



Colour-treated Diamonds

Quality Guidelines

In our New Jewellery Auctions, we auction jewellery with colour-treated diamonds with the following characteristics:

- **Clarity:** Minimum I1.
- **Shape & Cutting style:** round and fancy. Special cuts will be reviewed by experts. Old & rose cuts are not accepted.
- **Colour treatment:** Lab report should have clear disclosure of treatment details for all colour treated diamonds, regardless of size (lab report always required)
- **Accepted treatments:** Irradiation and HPHT
- **Black/Brown diamonds:** for these colours and stones above 1 ct. (per stone) a lab report is always required.

Restrictions:

- **Not accepted treatments:** Colour coating.
- **Clarity enhancement:** Clarity enhancement treatments (eg. fracture filling) are no longer be accepted starting from July 2024.
- Lab reports **for stones above >0.29ct with no clear origin of the colour** cannot be assessed as Natural Coloured Diamonds but **will be considered Colour-Treated Diamonds.**



Please note that in case of doubts regarding a treatment or the nature of a diamond, the expert may request a lab report.



Natural Gemstones

Quality Guidelines

In our New Jewellery Auctions, we auction jewellery with natural gemstones only with the following characteristics::

- **Shape & Cutting style:** faceted and cabochon (special cuts are accepted at expert's discretion).
- **Clarity:** Transparent to translucent (opaque gemstones are accepted at expert's discretion , based on the overall quality and value).
- **Accepted gemstones:** all gemstones are accepted with focus on popular gemstones such as : sapphire, ruby, emerald, aquamarine, etc.
- **Accepted treatments:** the most common treatments such as heating, surface diffusion, fracture filling, oiling etc. are accepted and need to be clearly disclosed in the description and in the gemological lab report.

Restrictions:

- **Treatments not accepted:** Dyeing
- **Doublets or Triplets** are not accepted.
- **Opals:** no treatment accepted.
- **White / Colourless gems** require a lab report regardless of value.
- **Jade:** not accepted unless accompanied by a lab report
- **No abraded facet edges,** chips or cavities.
- **No reconstituted gemstones.**
- **No synthetic gemstones.**



Pearls

Quality Guidelines

In our New Jewellery Auctions, we auction jewellery with pearls meeting the following criteria:

- **Type of pearls:** cultivated saltwater pearls of high quality (eg. Akoya, Tahitian, South Sea).
- **Colours:** only natural colours, no dyed pearls.
- **Condition:** pristine – we do not consider pearls with a blurry reflection, spots or marks and a low quality nacre.
- **Accepted treatments:** no colour treatment, only chocolate Tahitian will be considered.
- **Natural Saltwater pearls:** can be considered only with specific lab report – please list of approved labs [here](#).

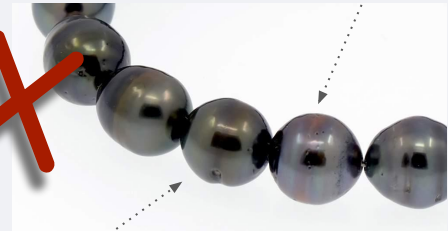
Restrictions:

- **Freshwater pearls:** can be accepted only in combination with gold and/or high-value natural precious stones.
- **Imitation pearls** – pearl-like products formed entirely by man are not accepted.
- **Metal parts:** gold-plated metal fitting is not accepted, high-quality silver fitting may be accepted.



Too much ringed

Color treated, not clean, not well-matched, dull



No lustre

Poor Finishing – Not knotted

Visible glue



Organic Materials

Quality Guidelines

In our New Jewellery Auctions, we auction jewellery with the following organic and biogenic materials:

- **Coral:** only species in accordance with current CITES regulations are accepted.
- **Pearls:** accepted, see all details on previous slide.
- **Mother-of-pearl:** it is allowed as an accent but not included in the valuation of the jewellery piece.

Restrictions:

- **Organic materials not accepted:** Amber, Ivory, ebony and tortoiseshell.
- **Types of Coral not accepted:** Bamboo coral, Apple coral are not allowed due to low quality and wide availability.



Degree of craftsmanship

Quality Guidelines

We only accept newly manufactured pieces of jewellery in our New Jewellery auctions with the following characteristics:

- **Refined professional finish or skillful execution.**
- Metal must be clean, with no residue or water spots, **free of noticeable defects** and distortions.
- **All parts of an item must be symmetrically** positioned, balanced and aligned, unless specified otherwise. Airways and other gallery work must be symmetrical and equally proportioned. They must also be properly set and secured.
- We accept **all varieties of settings**: prongs, bezel, pavé, channel etc. Nevertheless to avoid any damages, loosening or even stone loss, **we require sound designs and very good workmanship.**

Restrictions:

- **Fragile construction:** pieces of a rather weak and fragile construction aren't perceived to be of high quality and therefore not accepted.
- **No pieces with defects,** damages, polish marks.
- **Hobbyist look** jewellery is not accepted.

Pieces of a rather weak and fragile construction aren't perceived to be of excellent quality and attract fewer bidders.



Jewellery with a rather hobbyist look and feel or a rough finish does not adhere to premium quality and typically sells poorly.



Items not accepted

We **do not accept** the following items in our New Jewellery auctions:

- **Silver Jewellery and gold-plated jewellery** and / or made of non-precious materials such as steel or resin.
- Jewellery made with **less than 14k gold**.
- Jewellery set with **laboratory-grown diamonds described as 'Natural Diamonds' or generic 'Diamonds'**
- Jewellery set with **old cut and rose cut diamonds**
- Jewellery set with **synthetic gemstones**
- Jewellery set with **heavily treated gemstones** (eg. dyeing) and **treated opals**.
- Items set with **amber, ivory, ebony, tortoiseshell, and bamboo coral**.
- Jewellery with **poor degree of manufacturing**.
- **Items that are not in 'new' and immaculate condition**, direct from the producer, never worn or owned. Items previously bought on Catawiki and resubmitted for sale will be considered 'Pre-owned'.
- Jewellery with estimated **value above >€2.000 (for precious stones only) without a gemological report**.



Pre-owned Jewellery

- *Product Guidelines*
- *Material Quality*
- *Degree of Craftsmanship*



Pre-owned Jewellery Product Guidelines

Bidders at Catawiki look for special, premium quality pieces of pre-owned jewellery that are hard to find.



For these auctions, we seek **Jewellery pieces** that are:

- **pre-owned**, produced after 2000
- **bought from other stores (online or offline)**
- in **wearable condition**
- were **professionally designed** and **produced**
- reflect a **high degree craftsmanship**:
 - with a refined finish
 - skillful execution of the design
 - have a lasting construction
- have a **minimum expected selling price of €100**



Precious Metals

Quality Guidelines

In our Pre-owned Jewellery auctions, we auction jewellery made of the following precious metals:

- **Gold:** white, rose, yellow with at least 8 karat fineness.
- **Platinum:** at least 800 fineness.
- **Silver:** at least 925 fineness.
- Every jewellery piece needs to be officially Assay **hallmarked** or **professionally tested**.

Restrictions:

- **Gold-silver plated metal:** not accepted.
- **Minimum weight:**
 - Gold or Platinum with precious stones: **1 gram**
 - Gold or Platinum with no precious stones: **2 grams**
 - 8, 9, 10 Karat Gold: **4 grams**.
 - Silver with no precious stones: **50 grams**.



Natural Colourless Diamonds

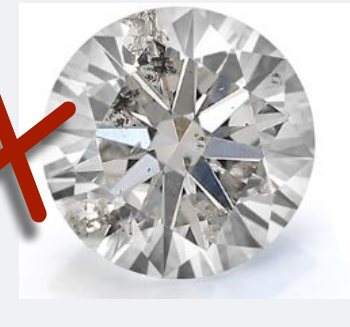
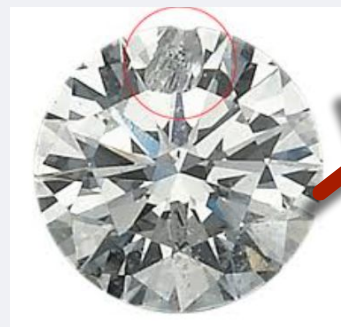
Quality Guidelines

In our New Jewellery Auctions, we auction jewellery with colourless natural diamonds with the following characteristics:

- **Clarity:** up to I1/I2, as long as inclusions do not deter the aesthetics and / or durability.
- **Shape & Cutting style:** classic cuts, round and fancy. Special cuts will be reviewed by experts. Old & rose cuts are not accepted.
- **Colour:** D to Z.
- **Carat weight:** all.

Restrictions:

- **Simulants:** not accepted.
- **No broken** or damaged diamonds.
- **Natural Diamond Jewellery items submitted with no lab report** cannot specify exact clarity, colour and cut grade will be assessed based on a flat price / ct.
- **Lab-grown diamonds found** in the natural diamond jewellery will be **subject to fine and permanent suspension** of seller's account.



Please note that in case of doubts regarding a treatment or the nature of a diamond, the expert may request a lab report.



Natural Coloured Diamonds

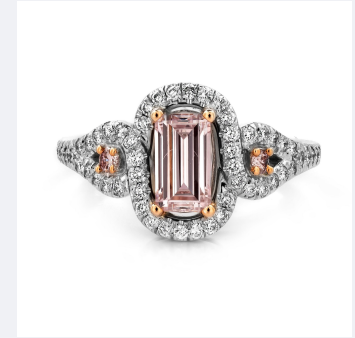
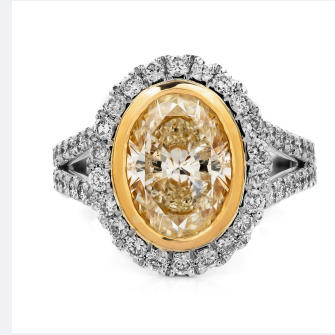
Quality Guidelines

In our New Jewellery Auctions, we auction jewellery with natural coloured diamonds with the following characteristics:

- **Clarity:** all grades, as long as inclusions do not deter colour and / or durability.
- **Shape & Cutting style:** round and fancy. Special cuts will be reviewed by experts. Old & rose cuts are not accepted.
- **Colour:** all colours indicating main fancy colour, intensity and overtone.
- **Carat weight:** all.
- **Lab report:** Always required for correct colour grading.

Restrictions:

- **Simulants:** not accepted.
- **No broken** or damaged diamonds.
- Natural Fancy Coloured Diamonds can **only** be submitted and approved in our auctions **with a gemological lab report**.
- Lab reports **for stones above >0.29ct with no clear origin of the colour** cannot be assessed as Natural Coloured Diamonds but **will be considered Colour-Treated Diamonds** unless the gemological lab is able to provide clear disclosure about origin of colour upon further analyses.



GIA NATURAL COLORED DIAMOND REPORT	
December 04, 2021	
Report Type	Grading Report
GIA Report Number	1409869895
Shape and Cutting Style	Heart Brilliant
Measurements	5.83 x 6.77 x 4.17 mm
Carat Weight	1.00 carat
Color Grade	Faint Pinkish Brown
Color Origin	Natural
Color Distribution	Not Applicable
Clarity Grade	S12

Please note that in case of doubts regarding a treatment or the nature of a diamond, the expert may request the lab to provide further proof regarding the origin of the colour.



Natural Gemstones

Quality Guidelines

In our New Jewellery Auctions, we auction jewellery with natural gemstones only with the following characteristics::

- **Shape & Cutting style:** faceted and cabochon (special cuts are accepted at expert's discretion).
- **Clarity:** Transparent to translucent (opaque gemstones are accepted at expert's discretion , based on the overall quality and value).
- **Accepted gemstones:** all gemstones are accepted with focus on popular gemstones such as : sapphire, ruby, emerald, aquamarine, etc.
- **Accepted treatments:** the most common treatments such as heating, surface diffusion, fracture filling, oiling etc. are accepted and need to be clearly disclosed in the description and in the gemological lab report.

Restrictions:

- **Treatments not accepted:** Dyeing
- **Doublets or Triplets** are not accepted.
- **Opals:** no treatment accepted.
- **White / Colourless gems** require a lab report regardless of value.
- **Jade:** not accepted unless accompanied by a lab report
- **No abraded facet edges,** chips or cavities.
- **No reconstituted gemstones.**
- **No synthetic gemstones.**



Pearls

Quality Guidelines

In our New Jewellery Auctions, we auction jewellery with pearls meeting the following criteria:

- **Type of pearls:** cultivated saltwater pearls of high quality (eg. Akoya, Tahitian, South Sea).
- **Colours:** only natural colours, no dyed pearls.
- **Condition:** pristine – we do not consider pearls with a blurry reflection, spots or marks and a low quality nacre.
- **Accepted treatments:** no colour treatment, only chocolate Tahitian will be considered.
- **Natural Saltwater pearls:** can be considered only with specific lab report – please list of approved labs [here](#).

Restrictions:

- **Freshwater pearls:** can be accepted only in combination with gold and/or high-value natural precious stones.
- **Imitation pearls** – pearl-like products formed entirely by man are not accepted.
- **Metal parts:** gold-plated metal fitting is not accepted, high-quality silver fitting may be accepted.

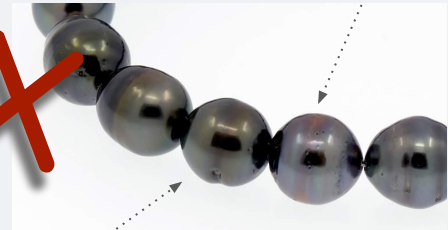


Too much ringed

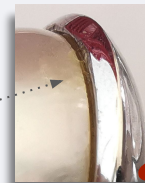
Color treated, not clean, not well-matched, dull



No lustre



Poor Finishing – Not knotted



Visible glue



Organic Materials

Quality Guidelines

In our New Jewellery Auctions, we auction jewellery with the following organic and biogenic materials:

- **Coral:** only species in accordance with current CITES regulations are accepted.
- **Pearls:** accepted, see all details on previous slide.
- **Mother-of-pearl:** it is allowed as an accent but not included in the valuation of the jewellery piece.

Restrictions:

- **Organic materials not accepted:** Amber, Ivory, ebony and tortoiseshell.
- **Types of Coral not accepted:** Bamboo coral, Apple coral are not allowed due to low quality and wide availability.



Degree of craftsmanship

Quality Guidelines

We only accept newly manufactured pieces of jewellery in our Pre-Owned Jewellery auctions with the following characteristics:

- **Refined professional finish or skillful execution.**
- Metal must be clean, with no residue or water spots, **free of noticeable defects** and distortions.
- **All parts of an item must be symmetrically** positioned, balanced and aligned, unless specified otherwise. Airways and other gallery work must be symmetrical and equally proportioned. They must also be properly set and secured.
- We accept **all varieties of settings**: prongs, bezel, pavé, channel etc. Nevertheless to avoid any damages, loosening or even stone loss, **we require sound designs and very good workmanship.**

Restrictions:

- **Fragile construction:** pieces of a rather weak and fragile construction aren't perceived to be of high quality and therefore not accepted.
- **No pieces with defects,** damages, polish marks.
- **Hobbyist look** jewellery is not accepted.

Pieces of a rather weak and fragile construction aren't perceived to be of excellent quality and attract fewer bidders.



Jewellery with a rather hobbyist look and feel or a rough finish does not adhere to premium quality and typically sells poorly.



Items not accepted

We **do not accept** the following items in our Pre-owned Jewellery auctions:

- **Gold-plated jewellery** and/or made of non-precious materials such as steel or resin.
- Jewellery set with **treated diamonds**.
- Jewellery set with **laboratory-grown diamonds or simulants** described as **Natural diamonds** or generic '**Diamonds**'
- Jewellery set with synthetic gemstones, **heavily treated gemstones** (eg. dyeing) and **treated opals**.
- Items set with **amber, ivory, ebony, tortoiseshell and bamboo coral**.
- Items with **poor degree of manufacturing**.
- Jewellery with estimated **value > €3.000 (for precious stones only) without a gemological report**.
- **Items in poor condition heavily worn, with broken parts and / or chipped or damaged stones.**



Antique & Vintage Jewellery

- *Product Guidelines*
- *Material Quality*
- *Degree of Craftsmanship*



Antique & Vintage Jewellery Product Guidelines

Bidders at Catawiki look for special, premium quality pieces of jewellery that are hard to find.



For our auctions, we seek **Jewellery pieces** that are:

- **Antique**, produced before 1930
- **Vintage**, produced from early 1930s up to late 1990s
- were **professionally designed** and **produced**
- reflect a **high degree of visible craftsmanship**, e.g.
 - with a refined professional finish
 - skillful execution of the design
 - have a lasting construction
- have a **minimum expected selling price of €75**



Precious Metals

Quality Guidelines

In our Antique & Vintage Jewellery Auctions, we auction jewellery made of the following precious metals:

- **Gold:** white, rose, yellow with at least 8 karat fineness.
- **Platinum:** with a hallmark between 850 & 950.
- **Silver:** at least 800 fineness.
- **Gold-plated metals:** subject to period correctness.

Jewellery pieces in gold, platinum or silver needs to be hallmarked or professionally tested with a statement of metal fineness.

Restrictions:

- **Minimum weight:**
 - Gold or Platinum with precious stones: **1 gram**
 - Gold or Platinum with no precious stones: **2 grams**
 - 8, 9, 10 Karat Gold: **4 grams.**
 - Silver with no precious stones: **20 grams.**



Natural Colourless Diamonds

Quality Guidelines

In our Antique & Vintage Jewellery Auctions, we auction jewellery with natural diamonds only:

White diamonds:

- **Clarity:** no restrictions.
- **Shape & Cutting style:** all modern and antique cuts.
- **Colour:** no restrictions.
- **Carat:** no restrictions.

Restrictions:

- **Treated diamonds:** not accepted.
- **Laboratory-grown diamonds:** not accepted – **if found** in the natural diamond jewellery will be **subject to fine and permanent suspension** of seller's account.
- A lab report is always required when described as D colour or IF clarity otherwise **Natural Diamond Jewellery items submitted with no lab report** cannot specify exact clarity, colour and cut grade will be assessed based on a flat price / ct.

When a seller's description and experts' opinion don't match, the expert may request a lab report.



Please note that in case of doubts regarding a treatment or the nature of a diamond, the expert may request a lab report.



Gemstones

Quality Guidelines

In our Antique & Vintage Jewellery auctions, we auction jewellery with natural gemstones but also with synthetic gemstones:

- **Natural gemstones:** all gemstones are accepted with focus on popular gemstones such as: sapphire, ruby, emerald, aquamarine, tanzanites, etc.
- **Synthetic gemstones:** only if they are period correct and of good quality. In the case of synthetic gemstones, it must be declared clearly in the description and object specifics.
- **Shape & Cutting style:** all shapes and cutting styles are accepted.

Restrictions:

- **We don't accept cubic zirconia and white stones**
- **Treatments not accepted:** Drilling, reconstituted stones and glueing.



** Reconstituted gemstones are stones that were constructed from natural (grounded) gemstone material fused with plastic resin (epoxy) and colouring agents and then compressed into blocks and cut.*

Pearls

Quality Guidelines

In our Antique and Vintage Jewellery auctions, we auction jewellery with pearls meeting the following criteria:

All types of vintage or antique pearls are accepted in excellent condition.

Natural Saltwater pearls: can only be considered with specific lab reports – list of approved labs [here](#).

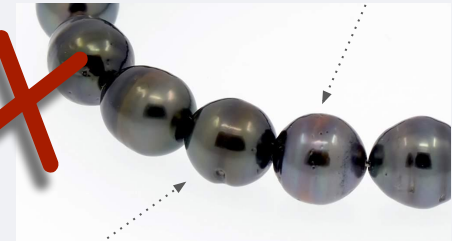
Restrictions:

- **Modern pearls** restrung on older clasps are not accepted.
- **Metal parts:** Gold-plated clasps and fixings are not accepted. Silver fittings are accepted if age specific.
- **Type of pearls excluded:** Low quality wholesale pearls, dyed or synthetic (Majorica).
- **Freshwater pearls:** are accepted if age specific.
- **Imitation pearls:** only if specific to a maker in Bijoux and in agreement with the expert.



Too much ringed

Color treated, not clean, not well-matched, dull



No lustre

Poor Finishing – Not knotted

Visible glue



Organic Materials

Quality Guidelines

In our Antique & Vintage Jewellery auctions, we auction jewellery with the following organic material:

- **Coral:** only species in accordance with current CITES regulations are accepted.
- **Amber:** accepted depending on age and style.
- **Pearls:** accepted, see previous slide.

Treatments:

- For suitable amber pieces, certain historical treatments such as heating to improve clarity are accepted.

Restrictions:

- **Type of coral not accepted:** Bamboo coral, Apple coral due to low quality and common availability.
- **Organic materials not accepted:** Ivory, ebony and tortoiseshell.
- **Amber:** wholesale amber ropes and jewellery are common and therefore not accepted.



Silver Jewellery

Quality Guidelines

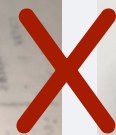
In our Silver Jewellery Auctions, we auction jewellery made of the following precious metals:

- **Period:** Pre-owned or contemporary silver jewellery, with special interest for items from the second half of 20th Century
- **Fineness:** Minimum 800 fineness, hallmarked or professionally tested with a statement of metal fineness.
- **Design:** Good craftsmanship, unique design and not easily available or mass produced.

Restrictions

- **Minimum weight:** 20 grams
- Easily available items such as light plain link bracelets & necklaces are usually not accepted.

**Exceptions may apply based on the special design, craftsmanship, and uniqueness of each piece.*



Degree of craftsmanship

We accept only newly manufactured pieces of jewellery in our Antique & Vintage Jewellery auctions with the following characteristics:

- **Refined professional finish or skillful execution.**
- Metal must be clean, with no residue or water spots, **free of noticeable defects** and distortions.
- **All parts of an item must be symmetrically** positioned, balanced and aligned, unless specified otherwise. Airways and other gallery work must be symmetrical and equally proportioned. They must also be properly set and secured.
- We accept **all varieties of settings**: prongs, bezel, pavé, channel etc. Nevertheless to avoid any damages, loosening or stone loss, **we require sound designs and very good workmanship.**

Restrictions:

- **Fragile construction:** pieces of a weak and fragile construction aren't perceived to be of high quality and not accepted.
- **No pieces with defects,** damages, polish marks.
- **Sets,** parures are not accepted.
- **Hobbyist look** jewellery is not accepted.

Pieces of a rather weak and fragile construction aren't perceived to be of excellent quality and attract fewer bidders.



Jewellery with a rather hobbyist look and feel or a rough finish does not adhere to premium quality and typically sells poorly.



Items not accepted

We **do not accept** the following items in our New Jewellery auctions:

- Items in **very poor condition**.
- Items with **poor degree of manufacturing**.
- Jewellery with **treated diamonds**.
- Jewellery set with **laboratory-grown diamonds**.
- Items set with **ivory, ebony, tortoiseshell and bamboo coral**.
- **Items easily available** with non special design (light gold chains, pearl earrings, small hoop earring, etc.)
- **Unmounted cameos**.
- **Loose clasps** unless the value or quality is remarkable.
- **Groups of items** unless they are part of a set.



Antique & Vintage Jewellery Condition

The condition of antique and vintage jewellery is very important to its value and desirability. We can consider items that show signs of restoration as long as these don't compromise the overall quality of the piece.

At Catawiki, we ask that all information about previous repairs, refurbishments and restorations are clearly detailed in the images and object description.

For Antique & Vintage Jewellery, we suggest adding the following statement or similar to add clarity and avoid any possible delays in screening and post-sale issues.

"Antique & Vintage jewellery is often refurbished, remodelled or repaired in order to prolong its enjoyment and wearable lifetime. It is not uncommon for older items to see evidence of this."



Brand Jewellery

- *Product Guidelines*
- *Brands Guidelines*
- *Material Quality*



Brand Jewellery Product Guidelines

Bidders at Catawiki look for special and quality pieces of brand jewellery that are special and highly desirable.



For our auctions, we seek **Brand Jewellery pieces** that are:

- From **International** reputable **Modern & Vintage brands**
- Reflect a **high degree of visible craftsmanship**:
 - professionally designed and produced
 - with timeless and iconic design
 - with original and unique design
- In **new or pre-owned condition**
- have a **minimum expected selling price of €100**



Brands Guidelines

In our Brand Jewellery auction, we are selecting and accepting design jewellery meeting at least 3 of the following criteria:

- Signed jewellery with **registered trademark**
- Brands with a **long-standing history** in the jewellery industry.
- **Brands with public listed prices**
- Brands that have built a **strong reputation** offline and **with solid online presence (website, social media channels, etc.)**
- Brands that have a **wide distribution** in Europe or Worldwide.
- Brands that are adopting **high standards of production** and quality check.
- Brands that may have **innovative, unique or iconic design**.

Cartier



B V L G A R I

TIFFANY & Co.



Desired Brands

Antique & Vintage Brands

Fouquet
Elizabeth Gauge
Garrads
Georg Jensen
Kutchinsky
Ilias Lalaounis
Lapponia
René Lalique
Georges Pierre
Charles Rennie Mackintosh
Seaman Schepps
Sterle
Tiffany

Modern Brands

Alfieri St John
Belperron
Boucheron
Buccellati
Bucherer
Bvlgari
Carrera y Carrera
Cartier
Chanel
Chantecler
Chaumet
Chimento
Chopard
Comete
Crivelli
Damiani
David Webb
David Yurman
De Beers
De Grisogono
Dinh Van
Dior
Fope
Fred
Giorgio Visconti
Graff
Gucci
H. Stern
Harry Winston
Hermès
Louis Vuitton
Mauboussin
Messika
Mikimoto
OJ Perrin
Otto Jakob
Pasquale Bruni
Patek Philippe
Piaget
Poiray
Pomellato
Recarlo
René Boivin
Repossi
Roberto Coin

Salvini
Tamara Comolli
Theo Fennell
Theodor Fahrner
Tiffany
Van Cleef & Arpels
Van der Bauwede
Verdura
Vhernier
Wempe



Rare & Hard to find

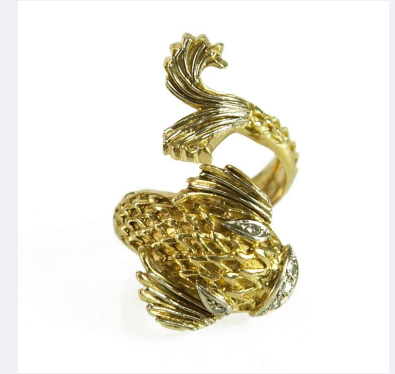
For true jewellery collectors

Examples of exclusive Vintage Jewellery brands that are rare and hard to find, highly sought after by vintage jewellery collectors:

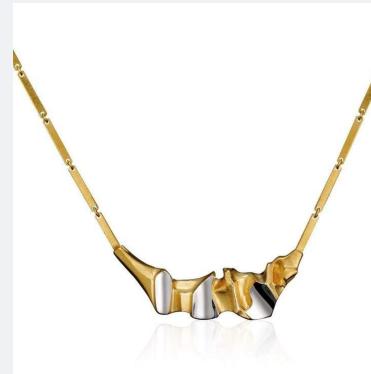
- **Fouquet**
- **Elizabeth Gauge**
- **Georg Jensen**
- **Kutchinsky**
- **Ilias Lalaounis**
- **Lapponia**
- **René Lalique**
- **Seaman Schepps**
- **Sterle**



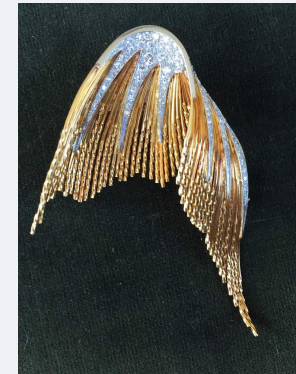
Kutchinsky Jewellery set



Ilias Lalaounis ring



Lapponia necklace



Sterle brooch



Timeless & Iconic

Most-wanted designs

Examples of iconic Brand Jewellery pieces that we seek for our auctions and are highly in demand:

- **Cartier** - Love collection / Panthère collection
- **Van Cleef & Arpels** - Alhambra collection
- **Pomellato** - Nudo collection
- **Tiffany** - Elsa Peretti collection / T collection
- **Bulgari** - B.zero1 collection
- **Georg Jensen** - Fusion collection
- **Fred** - Pain de sucre collection
- **Chopard** - Happy Hearts collection
- **Chaumet** - Joséphine collection
- **Graff** - Laurence Graff collection
- **Harry Winston** - Winston Candy collection



Cartier Love Bracelet



Fred Pain de sucre ring



Georg Jensen Fusion ring



Van Cleef & Arpels Necklace



Materials Guidelines

In our Brand Jewellery auctions, we auction pieces made of a wide range of materials:

- **Metal:** all type of Gold, Platinum and Silver are accepted. Gold-plated metal is subject to condition and brand positioning.
- **Diamonds:** only jewellery made with natural diamonds from all colours, treatments and grades. No lab-grown diamond jewellery is accepted.
- **Gemstones:** only jewellery made with natural gemstones – if stated 'untreated,' a certificate is needed.
- **Organic material:** all type of pearls and coral are accepted. All organic materials can be considered if compliant with CITES guidelines.

Every jewellery piece needs to be hallmarked and branded/signed.

Restrictions:

- Brand jewellery made of non precious metals such as steel or resin, is usually not accepted



Authenticity details

When reviewing quality and authenticity of branded jewellery items, **we may ask you to provide the following details**, clearly visible and readable:

- **Brand signature**
- **Maker's mark**
- **Serial number**
- **Metal hallmark**
- **Certificate of authenticity** from the brand
- A copy of the **original invoice**
- Photo of **original packaging & accessories**
- **Proof of provenance**



Items not accepted

We **do not accept** the following items in our Branded Jewellery auctions:

- Items in **very poor condition and/or showing bad refurbishment.**
- Brands that are **not meeting the brand criteria.**
- **Fashion Jewellery** that is very commercial and widely available (eg. Pandora, Swarovski, Buddha2Buddha, etc.)
- **Fashion Brand Jewellery** made of non precious materials (eg. Hermes, YSL, Chanel costume jewellery) will be redirected to the Fashion Category Auctions
- Fake brand jewellery and non-branded items which are **replicas of iconic designs.**
- **Non-matching jewellery sets** (eg. Cartier pendant with unbranded chain).



Objects submission

- *Authenticity & Certification*
- *Submission Guidelines*
- *Image Guidelines*
- *Reserve Price Management*
- *Provenance of Diamonds*



Authenticity & Report Requirements

Buyers are more likely to bid on your object if they know it is certified as being authentic. This is why we ask to see **certificates from trusted gemological institutes** for high-value types of jewellery.



We require a complete lab report (centre stone and side stones) for Jewellery:

- **Valued at € 2.000** or more for New Jewellery
- **Valued at € 5.000** or more for Pre-owned, Vintage & Antique Jewellery
- Items with gemstones described as 'untreated'
- Items containing pearls described as 'natural'
- Brand Jewellery generally do not require a gemological certificate.

The laboratory report needs to include clear disclosure of treatment details when relevant.

In case of any doubt regarding the quality or the nature of a material (regardless of the estimated value threshold) experts may request a report from a trusted gemological institute.



Gemological Laboratories

We recommend using **'Advanced' gemological labs** to certify the quality of jewellery pieces with an estimated value above > € 2.000 for New Jewellery items or above > € 3.000 for Vintage & Pre-owned Jewellery items, such as:

- GIA
- Gubelin
- IGI
- HRD

We only accept a complete jewellery report with testing of center stones and side stones unless agreed with the category.

Some exceptions on maximum thresholds and side stones certification may be considered upon seller's profile assessment and due diligence process applied on provenance of precious stones.

Please see full list of accepted labs per Country [here](#).

Important note:

If you're planning to certify a large volume of jewellery items with a report from a laboratory, please liaise with one of the experts before submitting your objects: <https://www.catawiki.com/en/help>



GIA®



GÜBELIN



IGI



Submission Guidelines

Potential buyers are more likely to bid on objects with a good description, with all the relevant information displayed clearly and, of course, beautiful photos.

Object Description

To help encourage potential buyers to bid on your item, you should include a detailed description of your object(s). This should be thorough and honest, and follow the guidelines on the next page.



Required object specifics

If you are using our website to upload your objects, tips will appear to give you guidance about what information we need to know. The fields that you fill in help to present the information in a way that's easy for the buyer to read.

The required information includes:

- **Brand** (if present)
 - **Type of item:** *Ring, Necklace, Bracelet etc.*
 - **Gender:** *Women's, Men's, Unisex*
 - **Period:** select the correct period of the item
 - **Metal:** *Gold, Silver, Platinum etc.*
 - **Size:** *The size relates to the ring size, necklace length or diameter of a bracelet. Make sure sizes are measured in mm or cm for necklaces and bracelets*
 - **Total weight:** *enter the total weight of your jewellery by using a jewellery scale*
- **Condition**
 - **Main stone characteristics (eg. Type, Clarity, Colour)**
 - **Total carat weight main stone**
 - **No. of stones**
 - **Secondary stone characteristics (eg. Type, Clarity, Colour)**
 - **Total carat weight secondary stone**
 - **No. of stones**
 - **Lab Report:** *select the laboratory that analysed the jewellery piece and generated the report*
 - **Lab report number.**



Ring size table

We recommend measuring rings using **mm as a preferred measurement unit.**

- Always measure the inner circumference.
- We recommend using a calibrated grooved mandrel to measure rings.
- Please refer to the Catawiki conversion table to select the correct size according to the circumference and diameter.
- For better auction results, please focus on most common and standard sizes for men and women.
- For full information on jewellery size guides, please click [here](#).

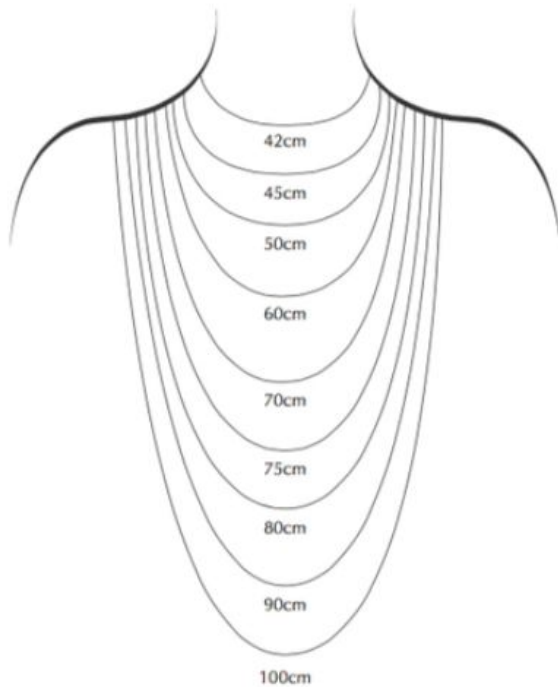


Calibrated madrel

Finger Size in MM	Diameter in MM	Ring Size			
		EUROPE	USA	UK	ITALY
44	14.01	44	3	F ½	4
45	14.33	45	3 ¼	G	5
46	14.65	46	3 ½	H	6
47	14.97	47	4	H ½	7
48	15.29	48	4 ½	I ½	8
49	15.61	49	4 ¾	J ½	9
50	15.92	50	5 ¼	K	10
51	16.24	51	5 ½	L	11
52	16.56	52	6	L ½	12
53	16.88	53	6 ¼	M ½	13
54	17.20	54	6 ½	N ½	14
55	17.52	55	7 ¼	O	15
56	17.83	56	7 ½	P	16
57	18.15	57	8	P ½	17
58	18.47	58	8 ¼	Q ½	18
59	18.79	59	8 ¾	R	19
60	19.11	60	9	S	20
61	19.43	61	9 ½	S ½	21
62	19.74	62	10	T ½	22
63	20.06	63	10 ¼	U ½	23
64	20.38	64	10 ¾	V	24
65	20.70	65	11	W	25
66	21.02	66	11 ½	W ½	26
67	21.34	67	11 ¾	X ½	27
68		68	12 ¼	Z	28
69		69	12 ½	Z ½	29
70		70	13		30
71		71	13 ¼		31



Necklaces & Bracelets size table



WOMEN	Wrist Size in CM	Size description
Extra Small	15 - 16 cm	suitable for very small wrist
Small	16.5 - 17 cm	fits small wrist
Medium	17 - 18 cm	standard size
Large	18 - 18.5 cm	for generous fitting

MEN	Wrist Size in CM	Size description
Medium	18 - 18.5 cm	fits a small men's wrist
Large	19 cm	standard size
Extra Large	19.5 - 20 cm	for generous fitting
Extra Extra Large	> 20 cm	for generous fitting

We recommend measuring bracelets and necklaces using **cm as a preferred measurement unit.**

- Always measure the inner circumference.
- For better auction results, please focus on most common and standard sizes for men and women.
- For full information on jewellery size guide, please click [here](#).



Condition grades



A
New*

Newly manufactured. Never worn, in pristine condition and not previously bought on Catawiki or other stores.



B
Excellent condition

Barely noticeable sign of use, pre-owned and/or re-polished by professional jeweller.



C
Very good condition

Some noticeable signs of use.



D
Good condition*

Several signs of use present on the item. All signs of use must be described and illustrated in detail.

***Up to Expert's review to approve for auction.**



E
Fair condition*

Very visible signs of use on the item, possible refurbishment and/or stones missing. All signs of use must be described and illustrated in detail.

***Up to Expert's review to approve for auction.**



Image Guidelines

Including strong photographs is key to catching buyers' eyes, ensuring they bid on your item.

Of course, buying online means potential bidders do not get a chance to see your object in person, therefore detailed and high-quality photographs are very important.



Photographs

To allow our experts, as well as our bidders, to get the right impression of an item, we require a minimum of 10 high-quality photos, giving:

- a 360 degree view of the item
- close-ups of important details, according to the guidelines on the next page



Image Guidelines

General requirements

- Upload **at least 6 photos** and **maximum 12 photos** of the item to allow us to check the authenticity.
- Make sure the entire item is **straight, centred, and fully within the frame of the photo**.
- Make sure your pictures are sharp, not overexposed and reflecting the actual colours of the item and not post-edited.
- Take photos from **all angles** (front, back, and both sides as well as the stamp and/or hallmark).
- Take all photos in daylight against a **neutral background**. Consider buying a white box and jewellery stands to get a professional result.
- Please **avoid self-portraits and bare hands**.
- Include image of the **paper version of lab report**.
- Please ensure that your images are **original photos** and not images taken from the internet. Please note that you are not allowed to use the previous seller's images



Image Guidelines

We require at least 6-8 photos of the item on white background to allow us to check the authenticity. Please include photos of:

1. Front
2. Back
3. Side (right)
4. Side (left)
5. Hallmark or maker's / pattern marks if present
6. From the top
7. If applicable, a sharp image or scan of the full paper laboratory report when present.

Restrictions:

- 1 image with a jewellery box is allowed but only if that same box is included in the delivery.
- No images with other objects
- No images with tags, labels, text, logos etc.
- No stock photographs.
- No post-editing editing, photoshop effects, frame in frame or other digital effects.

Images are important for experts and bidders to give the right impression of the condition and quality of an item.

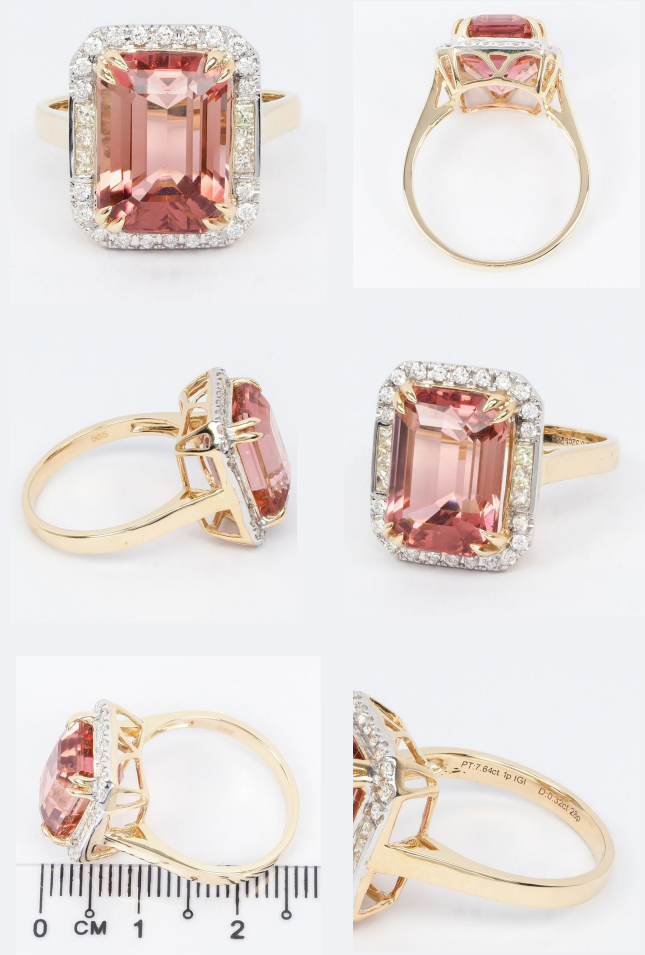


Image Guidelines

Brand Jewellery

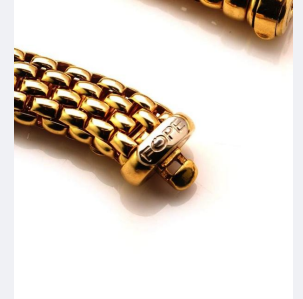
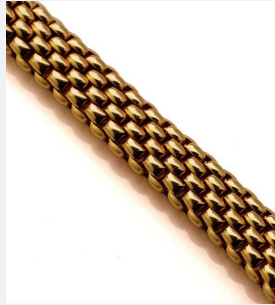
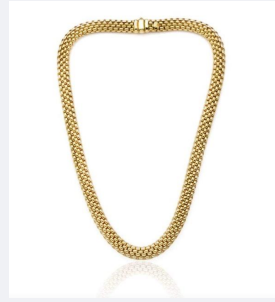
We **require at least 6-8 photos of the item** to allow us to check the authenticity and condition.

Please include photos of:

1. Front
2. Back
3. Side (left)
4. Side (right)
5. Brand signature
6. Maker's mark
7. Metal hallmark
8. Serial number

If available or requested:

9. Photo of **clasps and all fittings**
10. Photo of original **packaging and accessories** (box, brand certificate, etc.)
11. Photo of **invoice** if present
12. **Certificate of authenticity** from the brand



Reserve Price Management

Experts at Catawiki are curating all Jewellery items submitted on Catawiki, making sure these are matching the actual quality advertised by the seller. Besides the quality control, Experts are responsible for selecting and publishing Jewellery items that have the potential to sell fast within the duration of the auction (eg. one week).

Please note that we have limited space in our weekly auctions and we can not guarantee that every object submitted will be accepted and published when the chances of a successful sale are very low.

Therefore, Experts may request to lower Reserve Price when:

The initial Reserve Price set by the seller has a very low chance of success, looking at comparable items auctioned in the past and predicted selling prices based on material and style

After several attempts the object remains unsold - we can no longer allocate a spot in our auctions for objects that are repeatedly failing to sell.

Estimated Value Rules

New Jewellery items with an estimated value below €500 can only be approved without Reserve Price

Pre-owned, Antique & Vintage and Brand Jewellery items with an estimated value below €300 can only be approved without Reserve Price



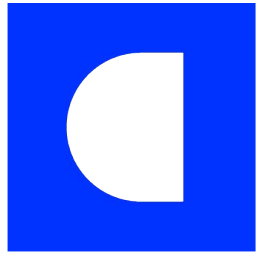
Provenance of Diamonds

Ethical sourcing and transparency in the trade of diamonds are very important to Catawiki. Our platform aims to create a trustworthy marketplace for our users and we believe that sellers providing assurance regarding the sourcing of the diamonds they offer, is key to achieving this goal.

As such, Catawiki requests sellers' cooperation in guaranteeing the provenance of diamonds set in the Jewellery items (New condition) offered on our platform, and ensuring that diamonds are not originated from a conflict zone, or any other diamonds banned country.

We expect also our sellers to offer on our platform only diamonds which are compliant with the Kimberley Process as this process plays an important role in the prevention of the trade of conflict diamonds and ensuring that diamonds originate from conflict-free zones. For more information regarding the Kimberley Process please visit the official website [here](#).





catawiki

Thank *you.*